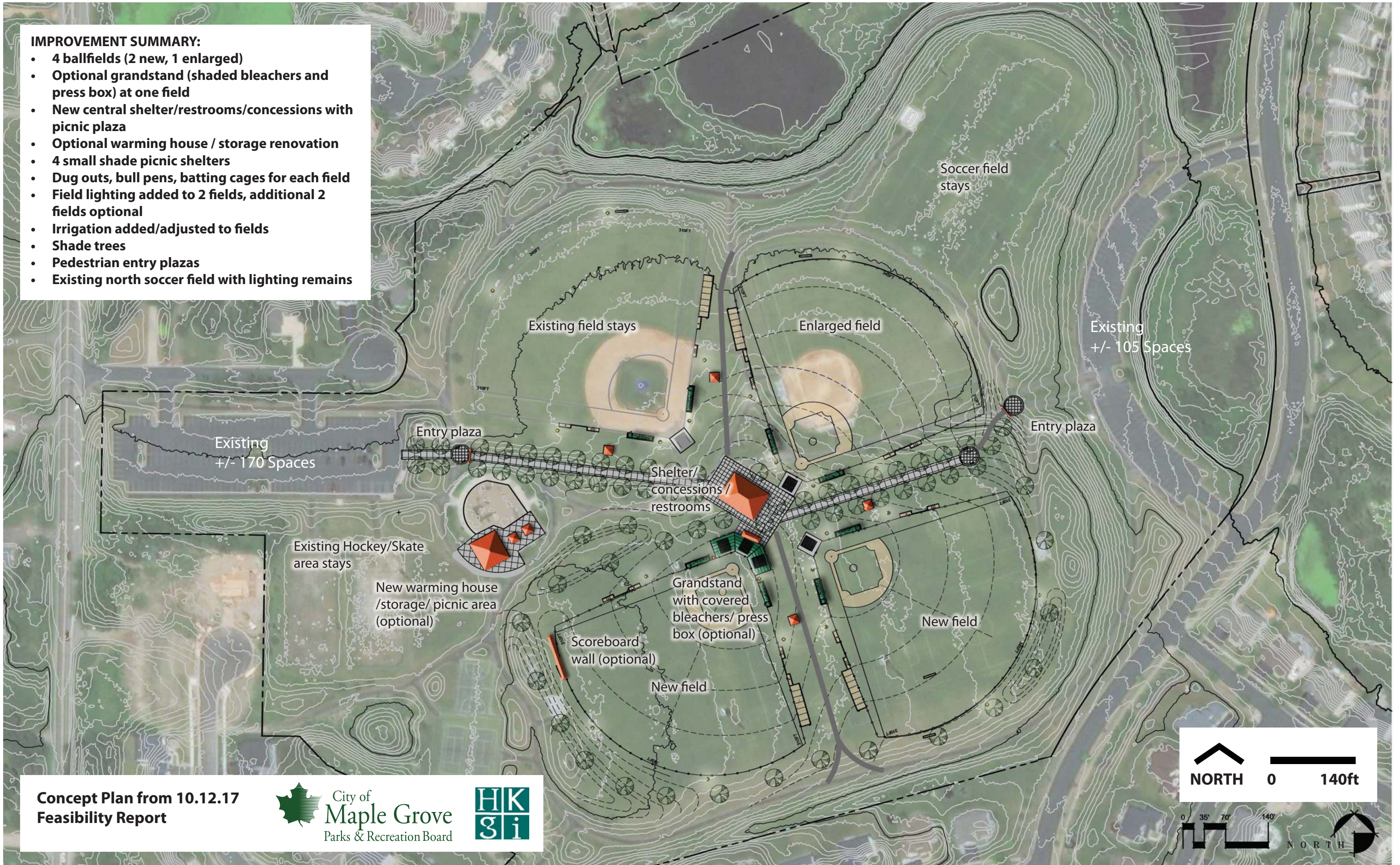


IMPROVEMENT SUMMARY:

- 4 ballfields (2 new, 1 enlarged)
- Optional grandstand (shaded bleachers and press box) at one field
- New central shelter/restrooms/concessions with picnic plaza
- Optional warming house / storage renovation
- 4 small shade picnic shelters
- Dug outs, bull pens, batting cages for each field
- Field lighting added to 2 fields, additional 2 fields optional
- Irrigation added/adjusted to fields
- Shade trees
- Pedestrian entry plazas
- Existing north soccer field with lighting remains



Concept Plan from 10.12.17
Feasibility Report

City of
Maple Grove
Parks & Recreation Board

